



8L-912Y Series Standard product specifications

One pump: 85,000 Barrels Every Day!

Introducing the world's largest three-screw crude oil pump.

With just one new Imo 8L-912Y pump you can:

- >> Transfer up to two and a half times more product than the proven Imo 8L-630
- >> Reduce the number of pumps per station while achieving higher production rates
- >> Increase your efficiency and simplify your pumping control process
- >> Lower your overall cost of operation

"Smart" Controls Technology adaptable.



Imo 8L-912Y Series Pump: Critical fluid-handling applications [Up to 2900 gpm (660 m³/h), pressure to 2000 psig (138 bar-g)]

The 8L series from Imo is known as the most solid and reliable pump in the oil industry for medium to high-pressure applications. The immense size and capacity of the new 8L-912Y not only responds to growing oil industry demands for higher energy efficiency and greater responsibility, but also reduces your energy costs and delivers unsurpassed reliability.

Product specifications:

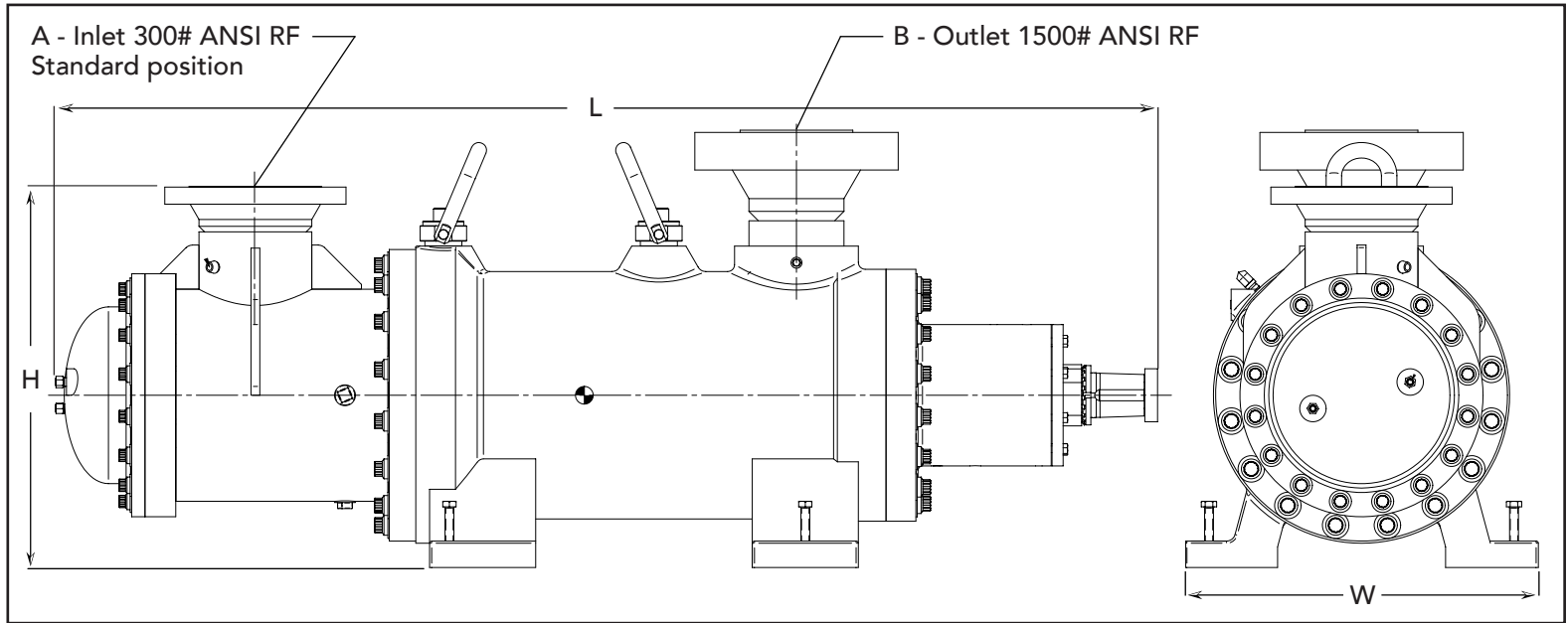
Casing:	Steel.
Rotor Housing:	Bi-metal construction - steel with thick Babbitt liner.
Power Rotor:	Alloy steel, nitride hardened and fully ground.
Idle Rotors:	Alloy steel, nitride hardened and fully ground.
Gaskets:	Fluoroelastomer.
Seal & Bearing:	Positive drive mechanical seal with carbide faces, fluoroelastomer O-rings and external ball bearings.
Accessories:	Completely mounted, built-to-order pump/driver assemblies available with bedplates, ANSI RF spool pieces, RTD's, vibration sensors, etc.
Outlet Pressure:	2000 psig (138 bar-g) maximum allowable 40 psig (2.8 bar-g) minimum allowable.
Inlet Pressure:	250 psig (17.2 bar-g) maximum Modification to higher pressures available - consult factory.

Viscosity:	60 SSU (10 cSt) to 25,000 SSU (5,400 cSt) consult factory for lower or higher viscosities.
Temperature:	0 to 225°F (-18 to 107°C) - consult factory for temperatures above 200°F (93°C).
Shaft Speed*:	1500 rpm maximum; above 1150 rpm / 200 cSt boosted inlet may be required.
Drive:	Direct only.
Rotation:	Clockwise facing pump shaft.
Mounting:	Foot mounted.
Port Locations:	Outlet port upward. Suction port rotatable in minimum 45° increments.



*Assumes minimum inlet pressure requirements are met.

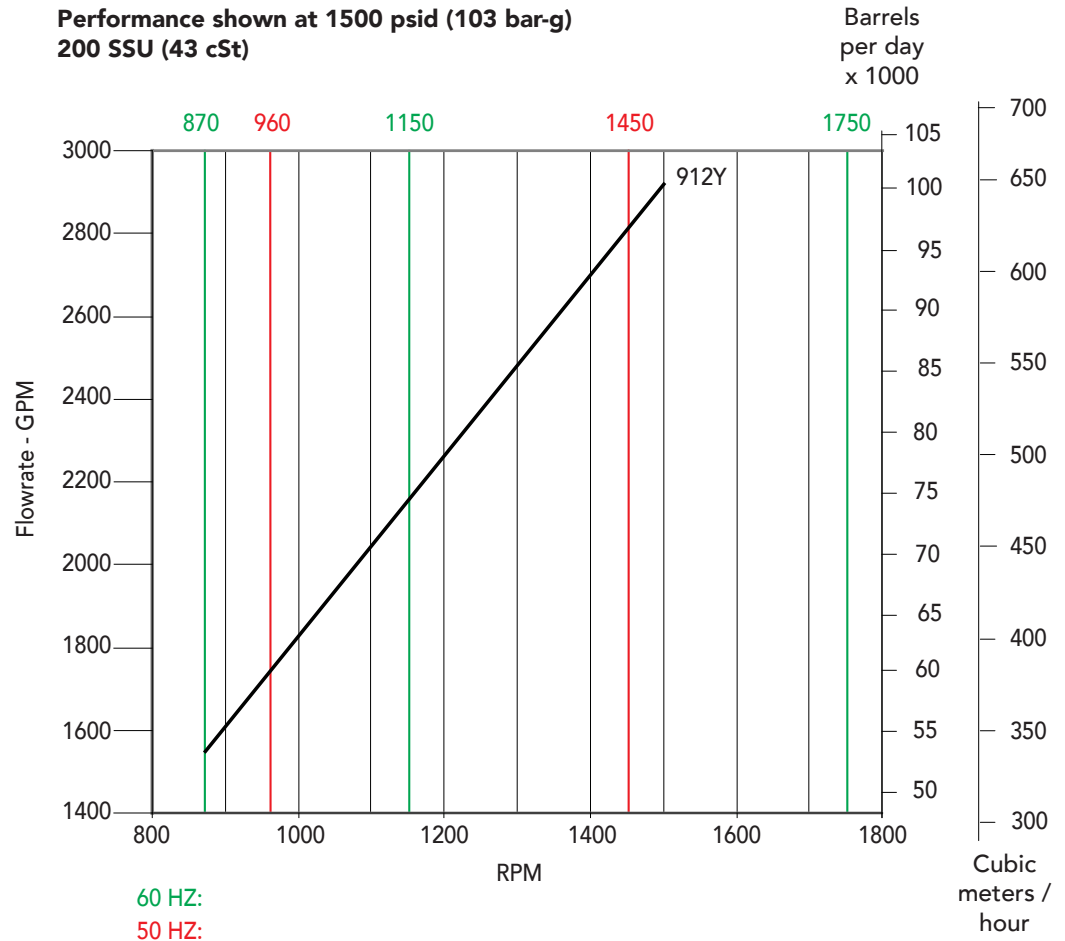
Dimensions & Weights



Dimensions & Weights

	SIZE	912
A	inch	12
	mm	305
B	inch	10
	mm	254
H	inch	43.1
	mm	1,095
L	inch	125
	mm	3,166
W	inch	40
	mm	1,016
WEIGHT	lb	15,550
	kg	6,872

Performance shown at 1500 psid (103 bar-g) 200 SSU (43 cSt)



Colfax Americas Tel: (877) 853-7867
1710 Airport Road (704) 289-6511
Monroe, NC 28110 USA